

Preparation of a Safety and Environmental Assessment and Design of Remediation Works for Uranium Tailings at AMCO Site

C&E · Consulting und
Engineering GmbH



D-09117 Chemnitz • Jagdschänkenstraße 52
Tel.: +49 (0) 371 881 4228 • Fax: +49 (0) 371 881 4311
E-mail: info@cue-chemnitz.de
Internet: www.cue-chemnitz.de

Objective: The Government of the Republic of Zambia (GRZ) has obtained the support of the World Bank and the Nordic Development Fund (NDF) for the Copperbelt Environment Project (CEP, the Project), to address the environmental liabilities and obligations which have remained with ZCCM Investments Holdings Plc. (ZCCM-IH) and GRZ following the sale of mining assets (AMCO sites).

The overall objective of this contract are:

- 1) Conduct an environmental impact assessment of the AMCO uranium tailings and the proposed remediation option.
- 2) Conduct a safety assessment of the proposed AMCO uranium tailings remediation option.
- 3) Recommendations for remedial measures for the uranium tailings, the AMCO site and the proposed waste management facility to ensure that they are brought into compliance with the requirements for the protection of human health and the environment.
- 4) Preparation of a conceptual design of the proposed AMCO uranium tailings waste management facility (Disposal Cell); and
- 5) Preparation of a detail design and tender documents for the AMCO uranium tailings waste management facility.

Location: Kitwe, Republic of Zambia

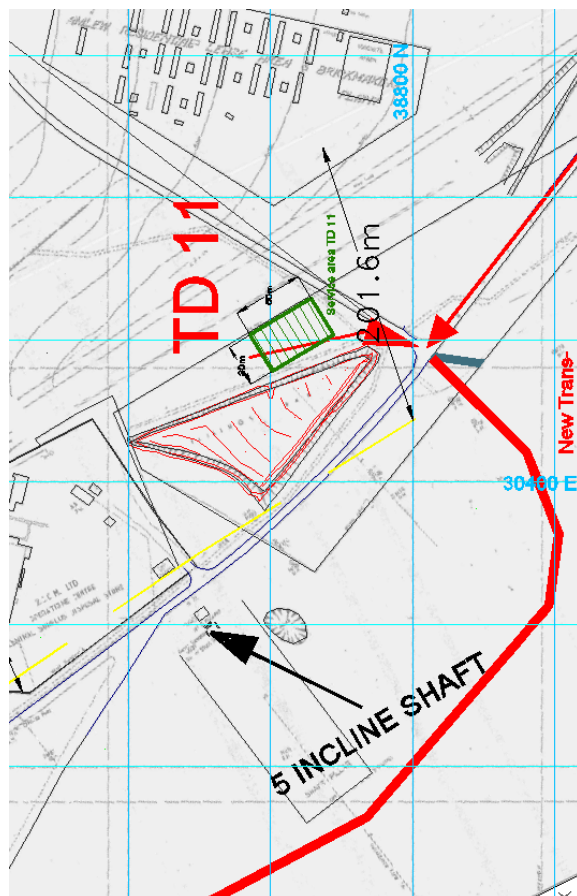
Client: ZCCM Investments Holdings Plc.

Beneficiary: Mopani Copper Mine

Duration: 2007-2008

Budget: 70.000 €

Initial Situation:



Preparation of a Safety and Environmental Assessment and Design of Remediation Works for Uranium Tailings at AMCO Site

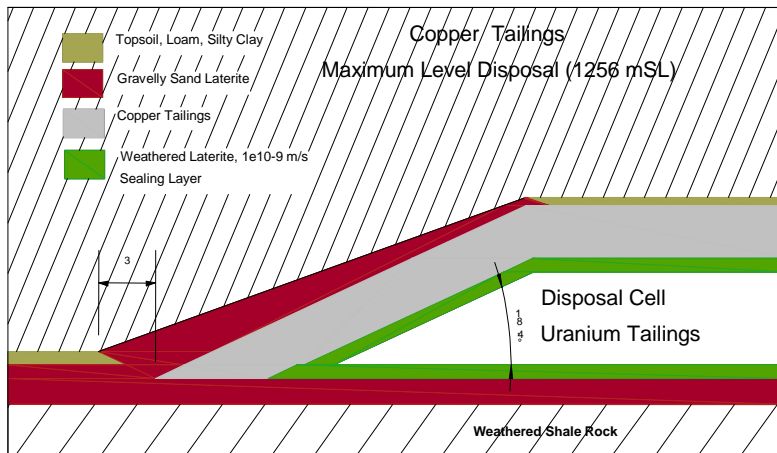
C&E · Consulting und Engineering GmbH



D-09117 Chemnitz • Jagdschänkenstraße 52
 Tel.: +49 (0) 371 881 4228 • Fax: +49 (0) 371 881 4311
 E-mail: info@cue-chemnitz.de
 Internet: www.cue-chemnitz.de

The AMCO sites (TD 11 and TD 13) are located adjacent to a residential area (200 m), Mindola, at the north-western periphery of the city of Kitwe some 500 m north of the Mindola Stream. Both AMCO sites are approximately 5 km away from the town center of Kitwe. The environment of the tailings sites, and partially TD 11 itself, is used for agriculture.

Scope of services:



- Review and updating of the existing Emergency Preparedness and Response Plans (EPRRs)
- Preparation of the training programs for designated mining company personnel
- Strengthening of the regional mine spill disaster response system
- Investigation and evaluation of incidents and accidents

- Preparation of Technical requirements for the acquisition of hardware, software and services needed for the system implementation
- Simulation Exercise of emergency Situations and running Training courses for Operators and Beneficiaries

