

**Engineering Analysis  
of geomechanical and radiological ratio  
in the areas of Kirchplatz St., Wolfgang's  
church in Schneeberg  
Development of the remediation solutions  
for long-term removal or/and reduction of  
damages caused by Wismut abandoned  
mining facilities**



C&E · Consulting und  
Engineering GmbH

D-09117 Chemnitz • Jagdschänkenstraße 52  
Tel.: +49 (0) 371 881 22 39 • Fax: +49 (0) 371 881 45 89

E-mail: [info@cue-chemnitz.de](mailto:info@cue-chemnitz.de)  
Internet: [www.cue-chemnitz.de](http://www.cue-chemnitz.de)

**Objective:** Development of the remediation solutions for long-term removal or/and reduction of damages caused by Wismut abandoned mining facilities in the areas of Kirchplatz St., Wolfgang's church in Schneeberg

**Location:** Schneeberg

**Client:** WISMUT GmbH  
Chemnitz

**Beneficiary:** WISMUT GmbH  
Chemnitz

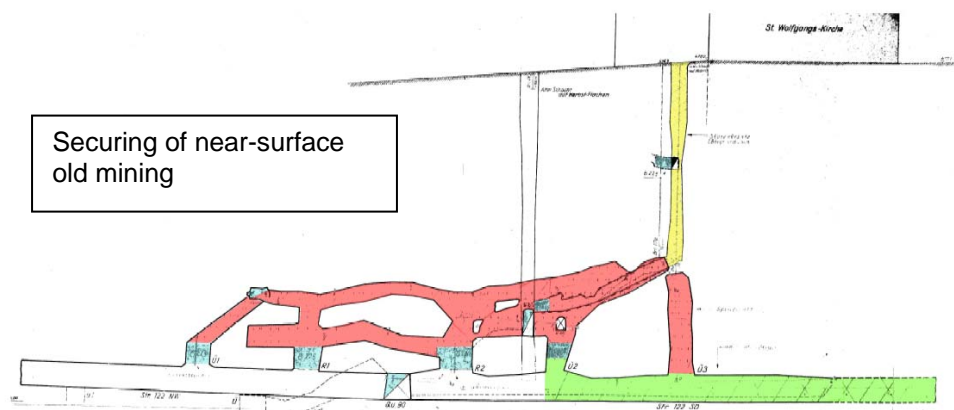
**Year:** 2005 – 2006

**Remediation area:** approx. 30 ha

**Budget:** 50 T€

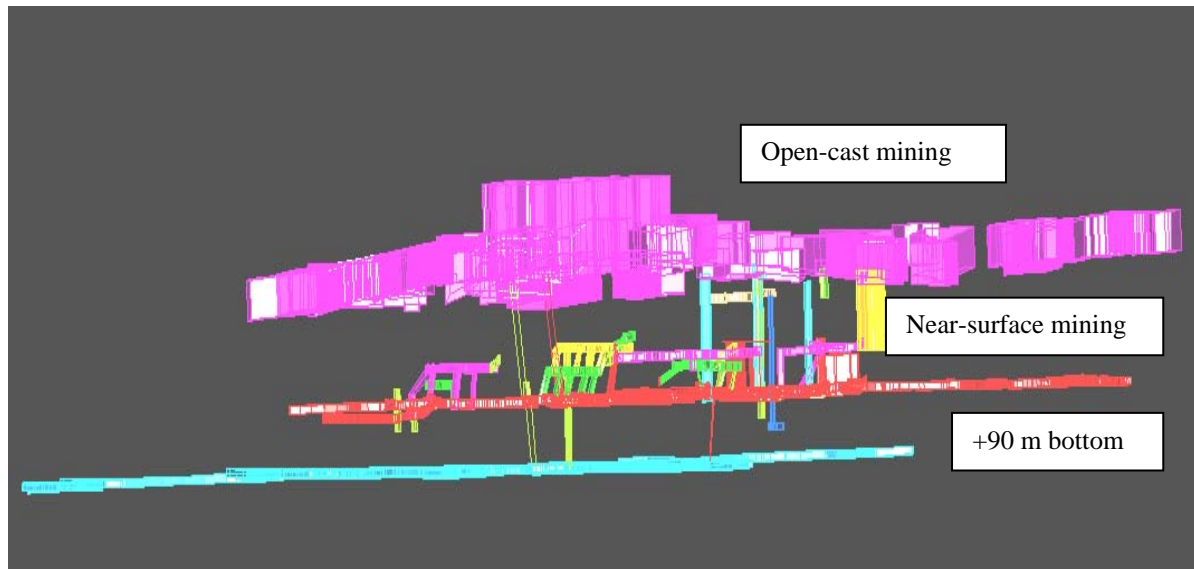
**Services provided:**

- **Analysis and assessment** of current mining damaged and radiological situation in the areas of Kirchplatz St., Wolfgang's church
- **Evaluation of mining damaged situation** for derivation of safekeeping measures under consideration of above objective
- **Evaluation of radiological situation** in connection with safekeeping measures
- **Working out of optimised safekeeping concept** under consideration of mining damaged-geotechnical and radiological results
- **Cost estimation** for the measures proposed



**Engineering Analysis  
of geomechanical and radiological ratio  
in the areas of Kirchplatz St., Wolfgang's  
church in Schneeberg**  
**Development of the remediation solutions  
for long-term removal or/and reduction of  
damages caused by Wismut abandoned  
mining facilities**

**C&E**  
C&E · Consulting und  
Engineering GmbH  
D-09117 Chemnitz • Jagdschänkenstraße 52  
Tel.: +49 (0) 371 881 22 39 • Fax: +49 (0) 371 881 45 89  
E-mail: [info@cue-chemnitz.de](mailto:info@cue-chemnitz.de)  
Internet: [www.cue-chemnitz.de](http://www.cue-chemnitz.de)



Visualisation overall location model (3-D)



Security done after finalization of 1. and 2. remediation phases