

Location of non-metallic drinking water pipes (from PVC, PE and GGG) using ground penetrating radar

C&E · Consulting und Engineering GmbH



D-09117 Chemnitz • Jagdschänkenstraße 52
Tel.: +49 (0) 371 881 42 28 • Fax: +49 (0) 371 881 43 11
E-mail: info@cue-chemnitz.de
Internet: www.cue-chemnitz.de

Objective: Revision and correction of existing plans of the regional water supplier

Location: Schönberg

Client: C&E –Vermessungstechnik GmbH

Beneficiary: Administration Lugau-Glauchau

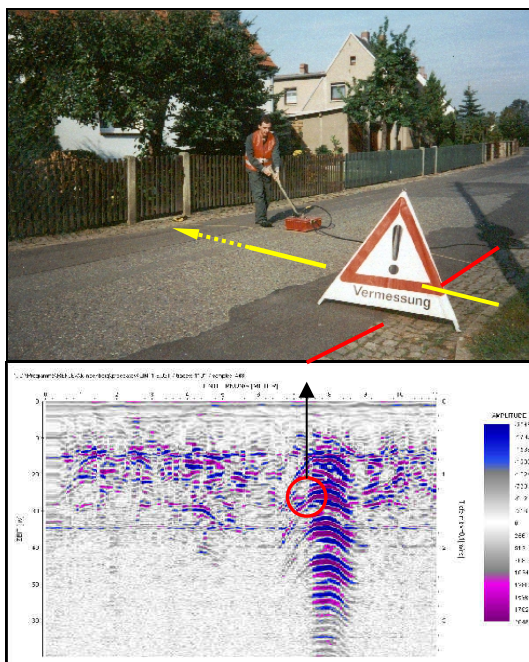
Period: 2000

Budget: 80.000 DM



Initial situation:

- In the years before the reunion the changes and modifications in the pipeline route were often given only irregularly, or only imprecise in the existing pipelines plans. According to the Land Correction Act all existing documents had to be reviewed and updated until 2006.



Services provided:

- Location of covered surface box by a metal detector
- Location of the pipeline course with a route length of approx. 16 km with GPR, position error is less than 0.5 m
- Determination of the depth of pipe with GPR
- Surveying in the field for subsequent new surveys.
- Supervision in cooperation with the commissioned survey company and client