

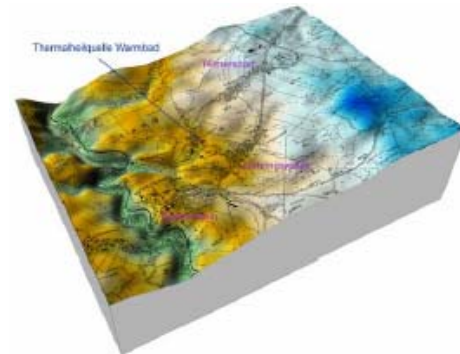
Qualification and creation of the mineral spa protection zone for the thermal water use in Warmbad

C&E · Consulting und Engineering GmbH



09117 Chemnitz • Jagdschänkenstraße 52
 Tel.: +49 (0) 371 881 22 39 • Fax: +49 (0) 371 881 45 89
 E-mail: info@cue-chemnitz.de
 Internet: www.cue-chemnitz.de

Objective: Against the background of conflicts of interest between the use of geothermal energy and the protection of the thermal springs in Warmbad it should be find a balance for use of the mineral spa protection zones and proposed appropriate limitations of use



Location: Warmbad

Client: LfUG

Beneficiary: Mittlerer Erzgebirgskreis

Year: 2006 - 2007

Budget: 82.000 €

Initial situation:

The thermal spring of Warmbad / Gehringwalde at Wolkenstein was mentioned in documents of 1284. It is the oldest, still used balneological thermal spring in Saxony. The final declaration of protective area for the natural remedy of Warmbad was dated 21.11.1979. But the regulation concerning geothermal energy is not sufficient anymore.



Projektleistungen:

- Surface geophysical survey of part of the surface catchment
- 80m-drilling for exploration of geophysics localized fault zone, borehole geophysics, hydraulic tests
- Implementation of hydrochemical and isotope hydrological investigations
- Revision of the hydrogeologic model
- Proposal of protection zone and recommendation for restrictions on use