

Landfill Oelpfanner Weg - Expansion and Closure -

C&E · Consulting und
Engineering GmbH



D-09117 Chemnitz • Jagdschänkenstraße 52
Tel.: +49 (0) 371 881 4228 • Fax: +49 (0) 371 881 4311
E-mail: info@cue-chemnitz.de
Internet: www.cue-chemnitz.de

Project target: Planning and supervision of the extension, securing and closure of the former communal landfill according to TASie including all corresponding installations such as reshaping of the landfill, remediation of waters, drainage of infiltration- and surface water, collection of gas and utilisation of gas.

Location: Schwarzenberg/
Erzgebirge

Client: Regulatory Body
for Waste
Management SW
Saxony

Beneficiary: Regulatory Body
for Waste
Management SW
Saxony

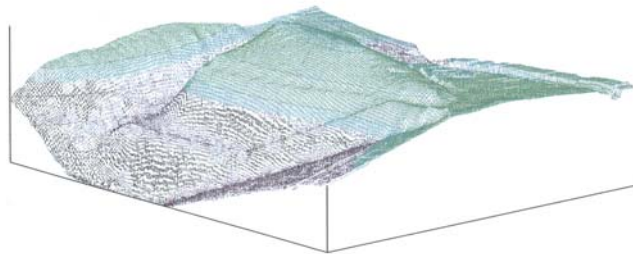
Time period: 1994 – 2002

Constr. costs: 5,3 Mill. €

Initial situation:

The former unsorted communal landfill on the border to Schwarzenberg had to be remediated and prepared for closure according to the guidelines stipulated by TASie because the discharge of hazardous contaminated material into the water, air and soil presented a danger for the environment and the population.

Computer Simulation



Main tasks:

- Risk estimation, Hydrogeology
- Preliminary and approval planning

Technical data:

- Expansion volume: 120.000 m³
- Total area: 5 ha
- Final height: 28 m
- Interim cover with mineral soil: 0,5 m
- Seepage treatment
- Seepage collection: External
- Active degasification: gas well, flare

