

Design
Landfill closure Rodewisch
- protection and recultivation -

C&E · Consulting und
Engineering GmbH



09117 Chemnitz • Jagdschänkenstraße 52
Tel.: +49 (0) 371 881 22 39 • Fax: +49 (0) 371 881 45 89
E-mail: info@cue-chemnitz.de
Internet: www.cue-chemnitz.de

Objective: Landfill closure
Rodewisch

Location: Rodewisch

Client: Waste Disposal Association
Vogtland (EVV)

Beneficiary: Waste Disposal Association
Vogtland (EVV)

Year: since 2005



**Design
Landfill closure Rodewisch
- protection and recultivation -**

C&E · Consulting und
Engineering GmbH



09117 Chemnitz • Jagdschänkenstraße 52
Tel.: +49 (0) 371 881 22 39 • Fax: +49 (0) 371 881 45 89
E-mail: info@cue-chemnitz.de
Internet: www.cue-chemnitz.de

Services provided:

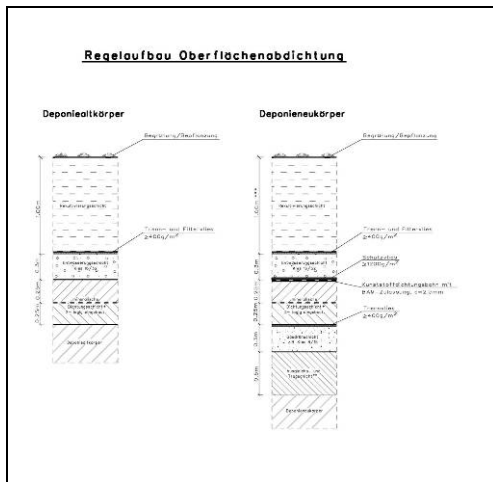
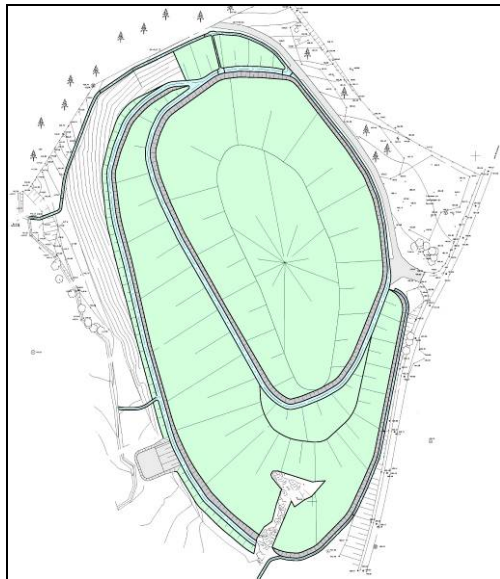
Phases

- Settlement prognosis
- Stability calculation
- Design and approval planning
- Detailed design
- Site management and site supervision

Content

Surface sealing in the area of new landfill body and mineral surface sealing in the area of old landfill body, landfill gasification, construction of surface water intake, greening/ planting of landfill body, preparation of the defect notification period

- ca. 25.200 m² surface sealing,
- ca. 19.900 m² mineral surface sealing
- Renaturation of 3 existing gas wells incl. well access lines,
- Reconstruction of 2 existing gas wells,
- Drilling of 3 gas wells,
- Relocation of approx. 1.600 m PE-pipeline of landfill gas disposal,
- 1.300 m construction of drainage ditches for discharge of landfill surface water,
- 39.400 m² landfill body recultivation by grass seeds and shrubs,
- Construction and measuring of 18 settlement levels to control the deformation behaviour of landfill body within the aftercare period,
- Construction and measuring of 13 gas levels



Design Landfill closure Rodewisch - protection and recultivation -

C&E · Consulting und
Engineering GmbH



09117 Chemnitz • Jagdschänkenstraße 52
Tel.: +49 (0) 371 881 22 39 • Fax: +49 (0) 371 881 45 89
E-mail: info@cue-chemnitz.de
Internet: www.cue-chemnitz.de

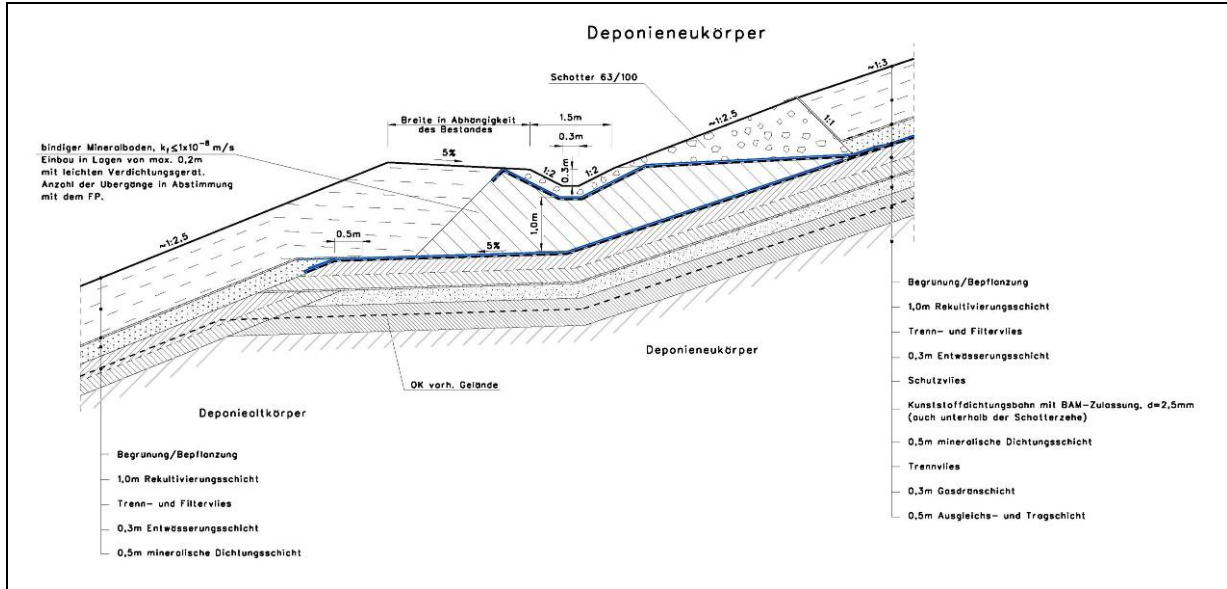


Illustration: typical cross section, berm, new landfill body

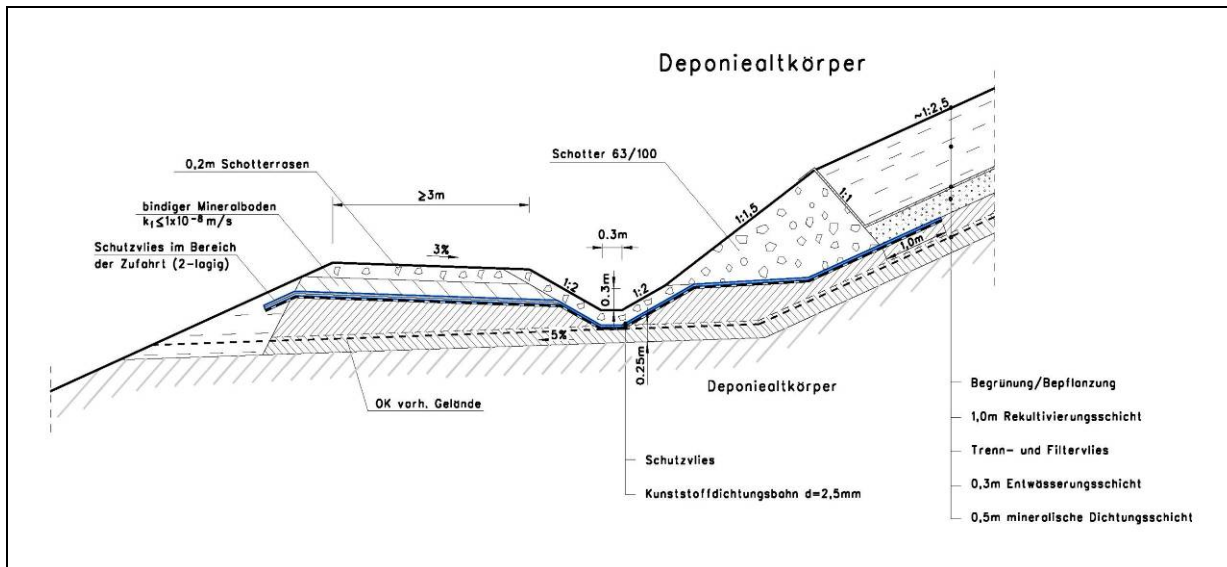


Illustration: typical cross section, berm, old landfill body

Design Landfill closure Rodewisch - protection and recultivaton -

C&E · Consulting und
Engineering GmbH



09117 Chemnitz • Jagdschänkenstraße 52
Tel.: +49 (0) 371 881 22 39 • Fax: +49 (0) 371 881 45 89
E-mail: info@cue-chemnitz.de
Internet: www.cue-chemnitz.de

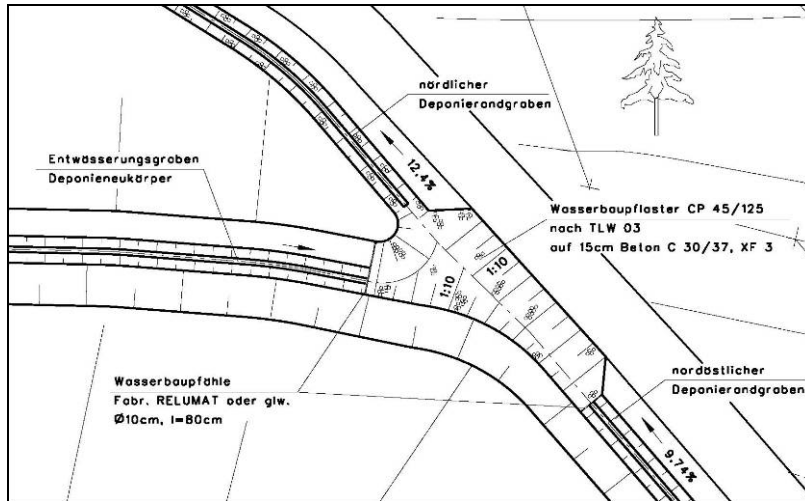


Illustration: ford

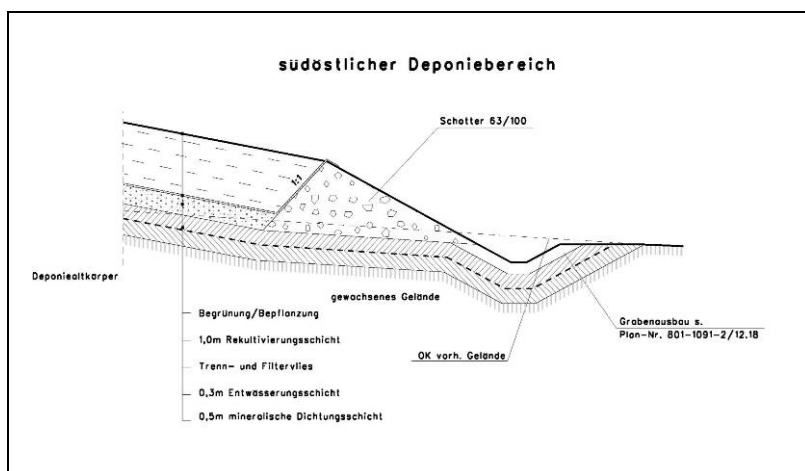
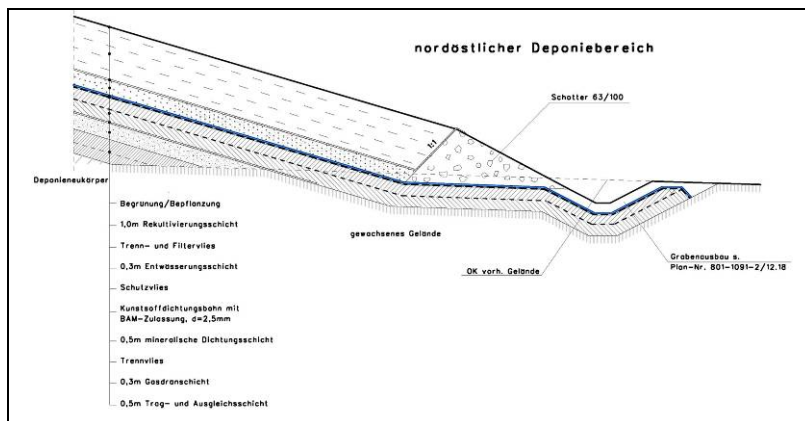


Illustration: surface sealing of the existing area