

# Design of a navigable waterway Geierswalder See – Senftenberger See / Diversion channel 12

C&E · Consulting und  
Engineering GmbH



09117 Chemnitz; • Jagdschänkenstraße 52  
Tel.: +49 (0) 371 881 22 39 • Fax: +49 (0) 371 881 45 89  
E-mail: [info@cue-chemnitz.de](mailto:info@cue-chemnitz.de)  
Internet: [www.cue-chemnitz.de](http://www.cue-chemnitz.de)

**Objective:** Navigable waterway  
Geierswalder See –  
Senftenberger See / Diversion  
channel 12

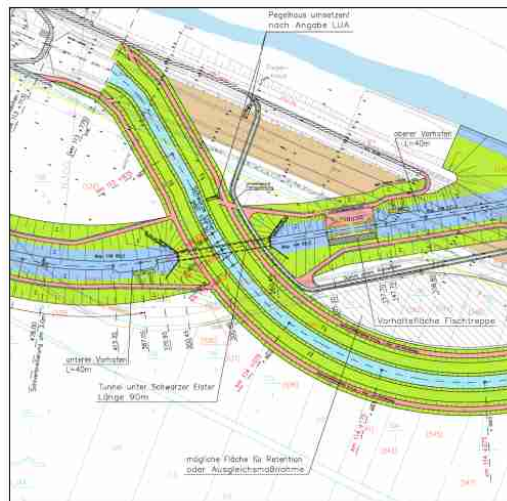
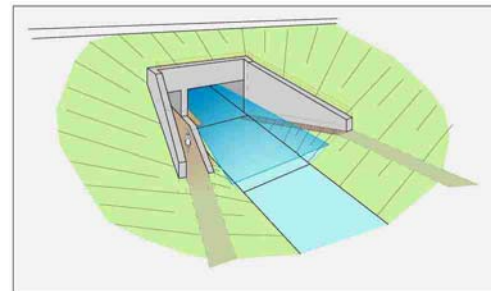
**Location:** Senftenberg/Germany

**Client:** LMBV

**Beneficiary:** LMBV,  
Brandenburg

**Duration:** 2005-2006

**Budget:** 6.502.000 €



## Scope of Services:

### Phases

- Basic evaluation
- Preliminary planning
- Draft and approval planning  
incl:
  - Subsoil investigation
  - Support structure planning
  - Environmental assessment and planning

### Part objects

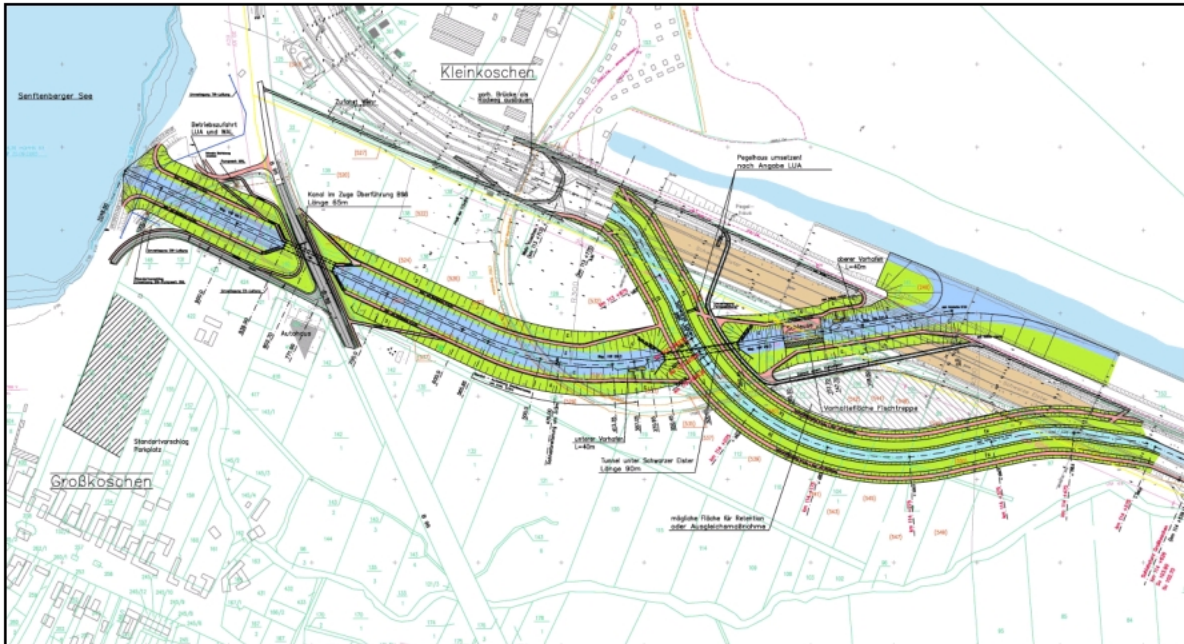
- Tunnel Schwarze Elster
- Diversion channel
- Crossing of B96 through navigable waterway and road concept
- Navigation lock structure
- Relocation Schwarze Elster

# Design of a navigable waterway Geierswalder See – Senftenberger See / Diversion channel 12

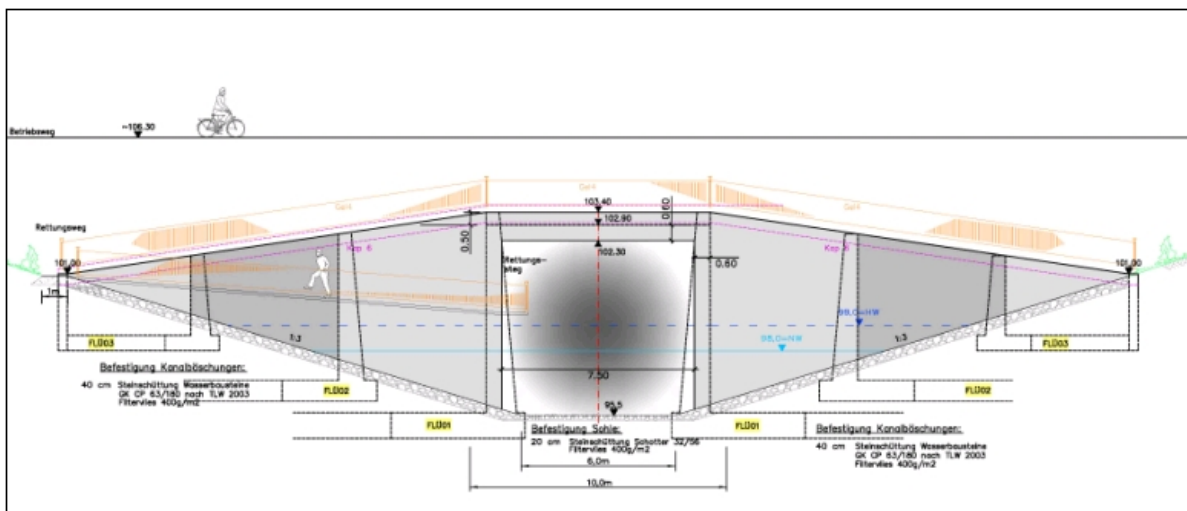
C&E · Consulting und  
Engineering GmbH



09117 Chemnitz • Jagdschänkenstraße 52  
Tel.: +49 (0) 371 881 22 39 • Fax: +49 (0) 371 881 45 89  
E-mail: info@cue-chemnitz.de  
Internet: www.cue-chemnitz.de



Plan



Tympanum