

**Planning
Navigable connection
Geierswalder See –
Senftenberger See / diversion 12**

C&E · Consulting und
Engineering GmbH



09117 Chemnitz • Jagdschänkenstraße 52
Tel.: +49 (0) 371 881 22 39 • Fax: +49 (0) 371 881 45 89
E-mail: info@cue-chemnitz.de
Internet: www.cue-chemnitz.de

Project objective: Navigable connection
Geierswalder See –
Senftenberger See / diversion
12

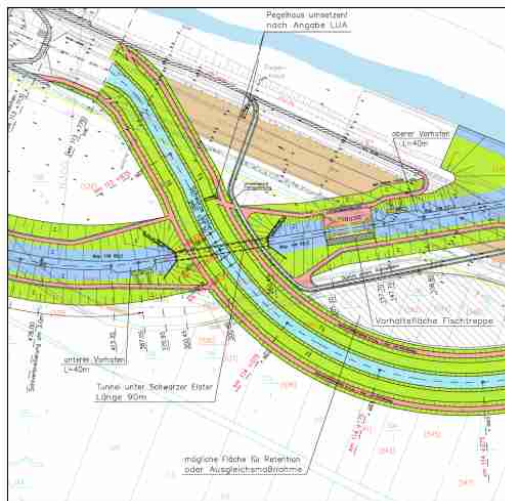
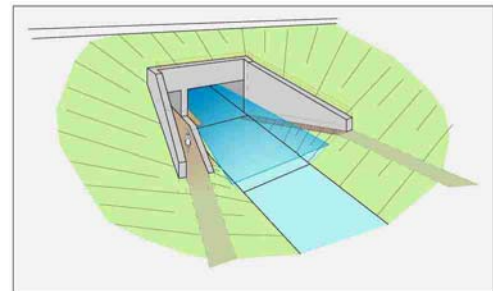
Location: Senftenberg

Client: LMBV

Beneficiary: LMBV,
Länderbereich Brandenburg

Period: 2005-2006

costs: 6.502.000 €



Main tasks:

Work phases

- Establishing the basis of the project
- Preliminary design
- Final design and building permission application:
- Exploration of foundation
- Structural engineering
- Detailed rural conservation plan

Subobject

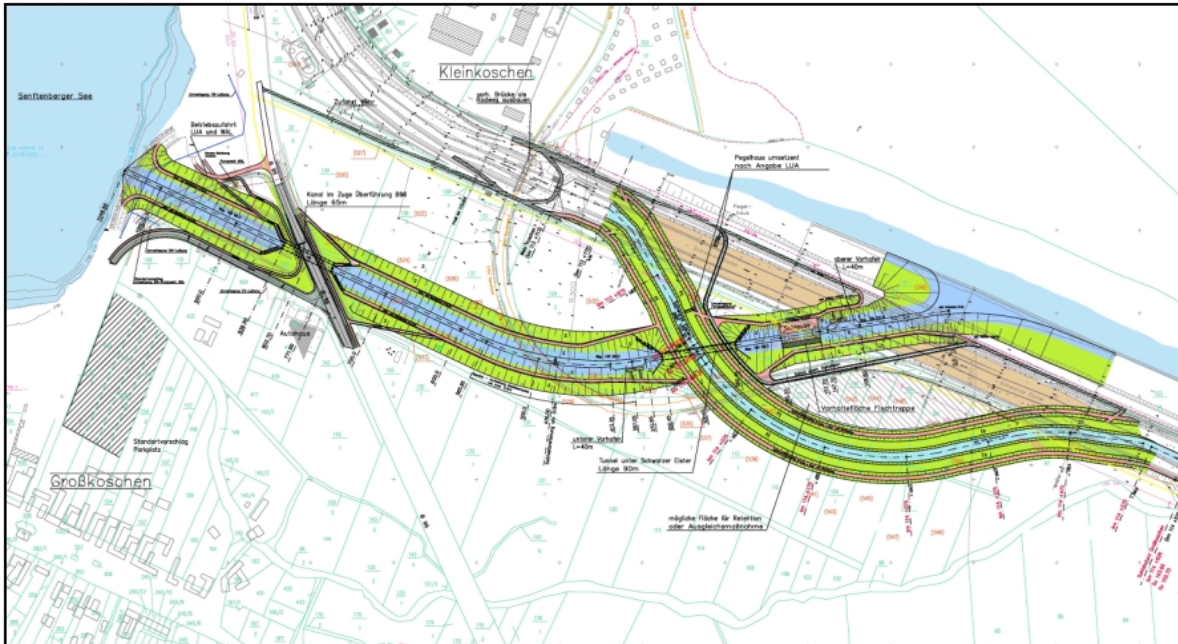
- Tunnel Schwarze Elster
- Diversion channel
- Overpass B96 over navigable connection and path conception
- Construction of navigation lock
- Relocation Schwarze Elster

**Planning
Navigable connection
Geierswalder See –
Senftenberger See / diversion 12**

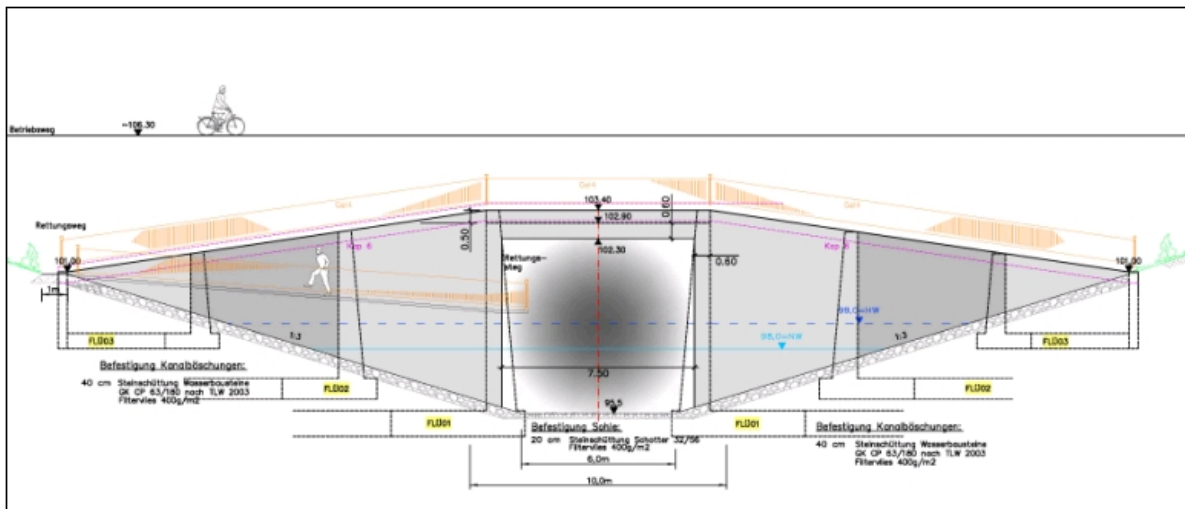
C&E · Consulting und
Engineering GmbH



09117 Chemnitz • Jagdschänkenstraße 52
Tel.: +49 (0) 371 881 22 39 • Fax: +49 (0) 371 881 45 89
E-mail: info@cue-chemnitz.de
Internet: www.cue-chemnitz.de



Site plan



Tunnelportal