

Analysis and optimisation of the surface water monitoring network under consideration of EU WFD and EU-Guidelines in Aue

C&E · Consulting und Engineering GmbH



D-09117 Chemnitz • Jagdschänkenstraße 52
 Tel.: +49 (0) 371 881 4228 • Fax: +49 (0) 371 881 4311
 E-mail: info@cue-chemnitz.de
 Internet: www.cue-chemnitz.de

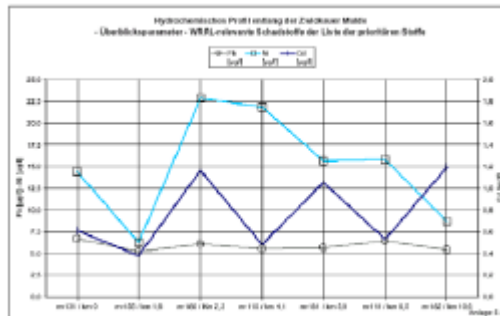
Objective: Optimisation of the surface water monitoring network under consideration of EU WFD and EU-Guidelines in Aue

Location: Saxony

Client: Wismut GmbH

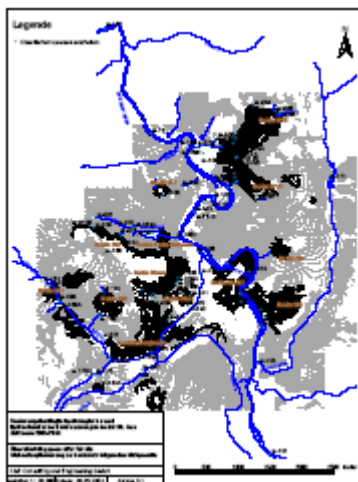
Beneficiary: Wismut GmbH

Year: 2004



Initial situation:

The surface water monitoring network of Wismut GmbH in Aue has 87 measuring points in the area of the river Zwickauer Mulde, Schlema stream, Alberoda stream and Bor stream. Since the remediation works at dumps and pits in the area of Aue have been mostly finalized, the monitoring for the essential supervision activities could be limited. It should be noted that this will be the medium-term remaining monitoring task of the Free State of Saxony. In this respect the optimisation of the surface water monitoring network under consideration of EU WFD and EU-Guidelines was done.



Services provided:

- Statistical analysis of approx. 5000 full analyses
- Hydrochemical assessment and interpretation of results
- Preparation and documentation of measuring data
- Integrative assessment involving the integration of hydrology and hydrodynamic
- Optimisation of monitoring network under consideration of EU WFD and EU-Guidence