

Planning Transfer line Sedlitzer See - Ilse-See

C&E · Consulting und
Engineering GmbH



09117 Chemnitz • Jagdschänkenstraße 52
Tel.: +49 (0) 371 881 22 39 • Fax: +49 (0) 371 881 45 89
E-mail: info@cue-chemnitz.de
Internet: www.cue-chemnitz.de

Objective: Transfer line Sedlitzer lake -
Ilse-lake

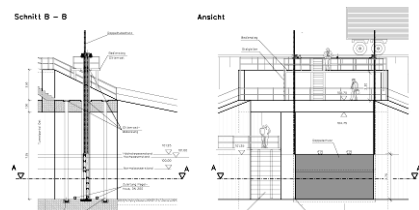
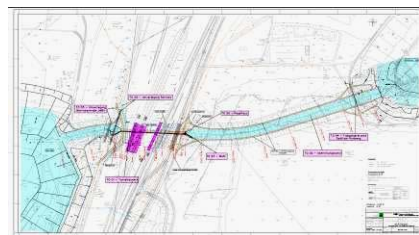
Location: Sedlitz/Germany

Client: LMBV GmbH

Beneficiary:
LMBV GmbH

Duration: 2003-2005

Budget: 10.000.000 €



Scope of Services:

Phases

- Preliminary planning
- Draft and approval planning

Contents

Construction of a navigable connection between previous open pit Sedlitz and Meuro,
Realisation of a touristy utilisation concept

Part object 01 – tunnel: 226m undercrossing of a existing road and rails with an integrated within walking distance connection of a site Sedlitz with the Ilse-See, incl. establishing of two tympanums

Part object 02 – transfer channel: navigable channel at the previous open pit area with the turn-around opportunities on the ports and water accompanying service and emergency routes

Part object 03 – dam construction: protection system in the east entrance of a tunnel for the controlled flow of a Ilse-See

Part object 04 – pedestrian bridge Sedlitzer loop road: pedestrian bridge. It will be used as a bicycle line as well as wood construction to conduct the planned loop roads over the system

Part object 05 – relocation of infrastructure (Rainitz, operation road LMBV): 250m relocation of the water Rainitz and existing operation road on the Ilse-See-Site over the tunnel

Part object 06 – level construction: for construction prosecution near the dam

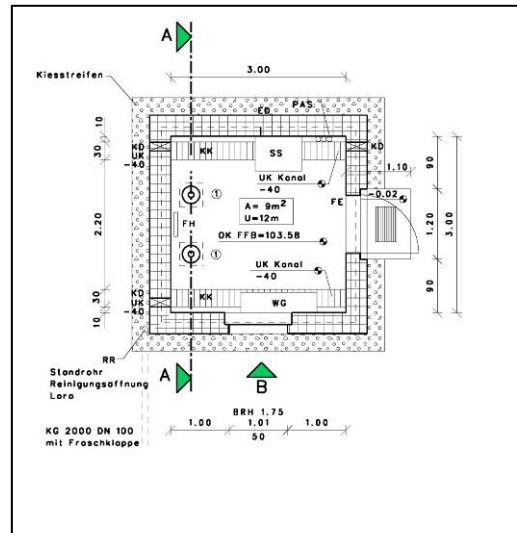
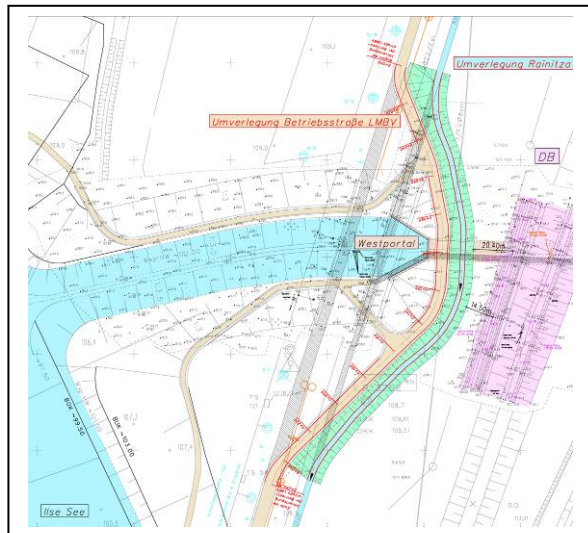
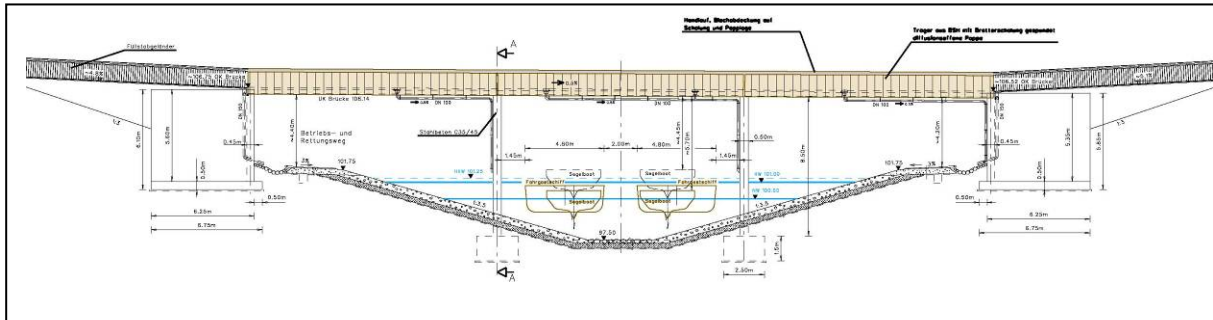
Planning Transfer line Sedlitzer See - Ilse-See

C&E · Consulting und
Engineering GmbH



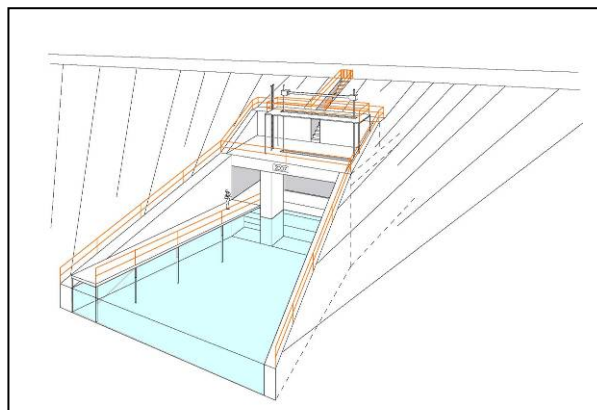
09117 Chemnitz • Jagdschänkenstraße 52
Tel.: +49 (0) 371 881 22 39 • Fax: +49 (0) 371 881 45 89
E-mail: info@cue-chemnitz.de
Internet: www.cue-chemnitz.de

Picture: pedestrian bridge Sedlitzer loop road, clear width of the bridge is 2,50m



Picture: relocation of infrastructure

picture: ground plan level construction



A controlled flow of Ilse-See is assured as a protection dam over the dam system.

Parameter:

Clear width: 6.50 m

Storage level: 3.75 m

Lift: 7.25 m

Conduction mass: 2.0 m³/s

The dam bulk closures are planned on both sides. Here a drain is possible. For the labour an operate level will be installed above 2-partial sluice.