

Detailed Design Flood Protection Measures of the municipality of Remse including design of fish ladder, sub-object 2

C&E · Consulting und
Engineering GmbH



09117 Chemnitz • Jagdschänkenstraße 52
Tel.: +49 (0) 371 881 22 39 • Fax: +49 (0) 371 881 45 89
E-mail: info@cue-chemnitz.de
Internet: www.cue-chemnitz.de

Objective: Preventive flood protection of
the municipality

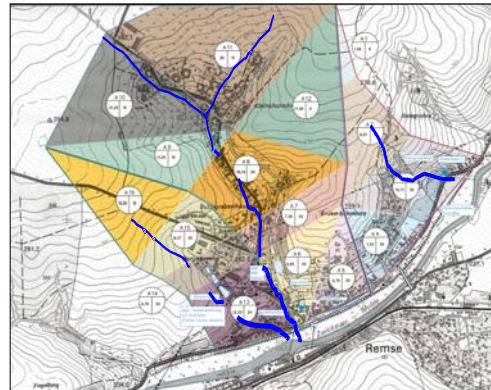
Location: Remse

Client: LTV Saxony

Beneficiary: LTV Saxony
Municipality Remse

Year: seit 2003

Budget: 1.500.000 €



Projektleistungen:

Work phases

- Estimation of the present value of project costs
- Soils report
- Calculation of stability
- Work phases 1-9, local site supervision

Sub-objects

Sub-object 1: Pumping station and accumulation basin
Sub-object 2: Rain retention basin Egersbach (fish ladder)
Sub-object 3: Retention area Steingrubenbach
Sub-object 4: Expansion of area KÜchenteichbach

Objectives:

- The site of Remse should be flood-proof designed by the prevention of the backwater appearance of the Zwickauer Mulde into the water Egersbach, KÜchenteichbach and Steingrubenbach and by deconcentration of the surface drainage
- Flow deceleration of waterbodies of the second order by retention (design of rainwater retention basin)
- Extraction of waterbodies of the second order in the case of flooding of the Zwickauer Mulde through the top of the dike

Contents:

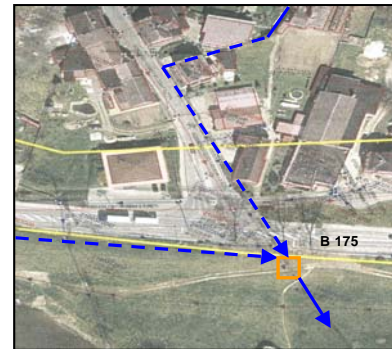
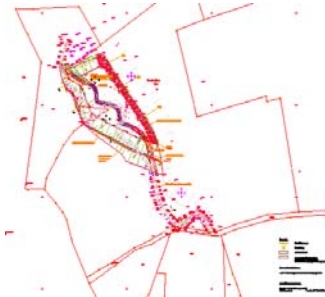
- approx. 80 m relocation of the course of river of Egersbach in the area of the rainwater retention basin
- approx. 140 m construction of the backwater channel DN 1600 – DN 1800 from PEHD
- Relocation of the channel DN 1200 from reinforced concrete, dyke DN 800, stoneware
- Relocation of reinforced concrete pipe DN 400 with underpass B 175
- Landscape conservation plan for the design of basins
- 1 unit pipeline construction with sluice valve of Ø1200 mm
- 2 units screw-conveyers of Ø 1800 mm, sheet length of 8 m
- Plant with securing of emergency power

Detailed Design Flood Protection Measures of the municipality of Remse including design of fish ladder, sub-object 2

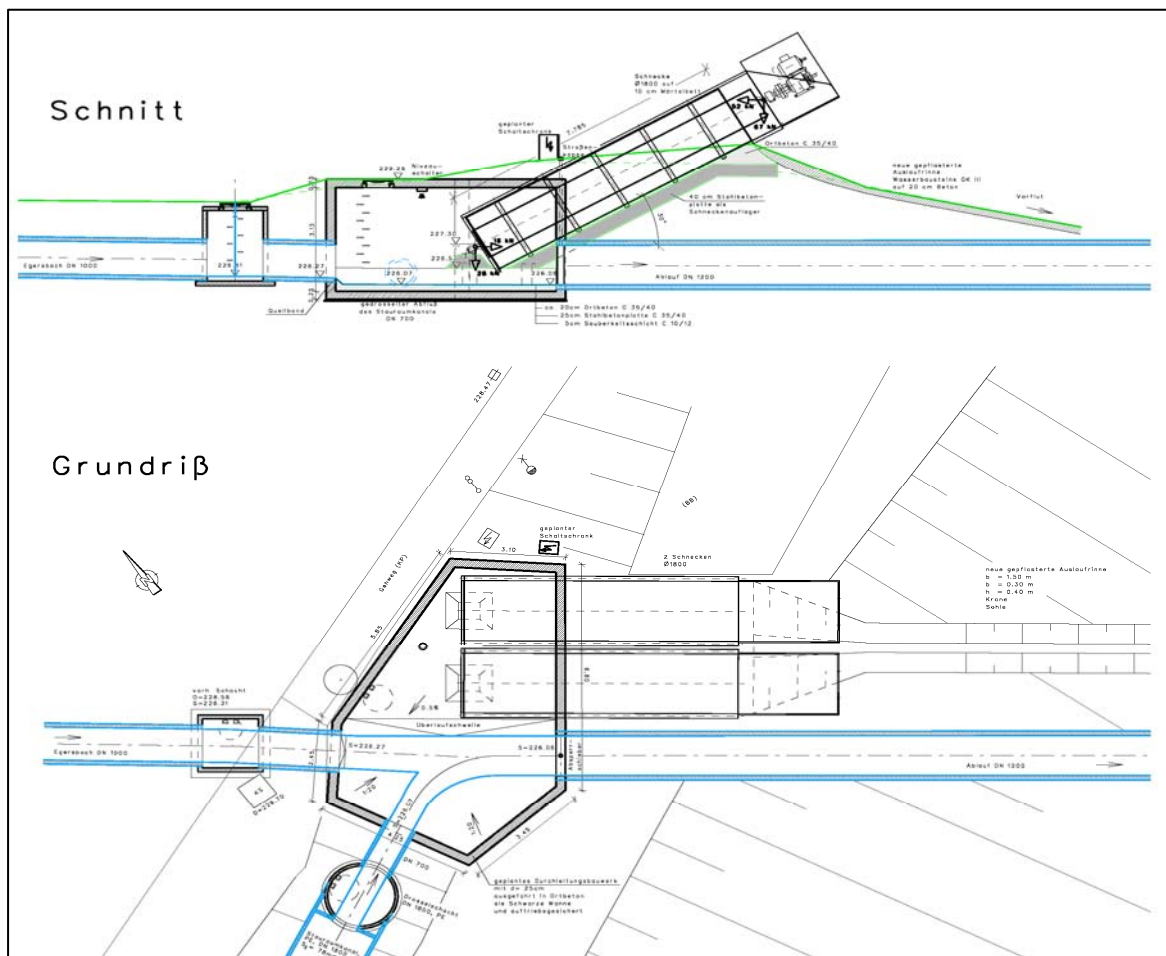
C&E · Consulting und
Engineering GmbH



09117 Chemnitz • Jagdschänkenstraße 52
Tel.: +49 (0) 371 881 22 39 • Fax: +49 (0) 371 881 45 89
E-mail: info@cue-chemnitz.de
Internet: www.cue-chemnitz.de



Sub-object 1: Pumping station and accumulation basin



**Detailed Design
Flood Protection Measures of the
municipality of Remse including
design of fish ladder, sub-object 2**

C&E · Consulting und
Engineering GmbH



09117 Chemnitz • Jagdschänkenstraße 52
Tel.: +49 (0) 371 881 22 39 • Fax: +49 (0) 371 881 45 89
E-mail: info@cue-chemnitz.de
Internet: www.cue-chemnitz.de



**Detailed Design
Flood Protection Measures of the
municipality of Remse including
design of fish ladder, sub-object 2**

C&E · Consulting und
Engineering GmbH



09117 Chemnitz • Jagdschänkenstraße 52
Tel.: +49 (0) 371 881 22 39 • Fax: +49 (0) 371 881 45 89
E-mail: info@cue-chemnitz.de
Internet: www.cue-chemnitz.de

Sub-object 2: Rain retention basin Egersbach (fish ladder)

