

**Remediation of landfill Lipprandis
Final closure of landfill
Lipprandis cells 1 to 3**

C&E · Consulting und
Engineering GmbH



D-09117 Chemnitz • Jagdschänkenstraße 52
Tel.: +49 (0) 371 881 4228 • Fax: +49 (0) 371 881 4311
E-mail: info@cue-chemnitz.de
Internet: www.cue-chemnitz.de

**Project
objective:**

Design, supervision and project management for:
Landfill extension and development of the Waste Management Centre as well as final closure of landfill cells 1 to 3 including all complementary facilities such as surface water and leachate collection, treatment and discharge, interim and final capping systems, gas collection and utilisation system.
Lipprandis is a municipal landfill with 14 ha area size and about 3 million m³ deposit volume.

Location:

Lipprandis Saxony

Client:

Regulatory Body
for Waste
Management SW
Saxony

Beneficiary:

Regulatory Body
for Waste Man-
agement SW
Saxony

Year:

2004 - 2008

Initial Situation:



Cells 1 till 3 of the landfill were temporarily covered; cell 1 – by mineral soil, cells 2 and 3 by qualified material of a mineral sealing layer. The cells 1 till 3 have been actively degasified and the surface water was professionally collected and discharged.

Phases

- Technical design and approval procedures
- Detailed and working design
- Preparation of tender documents, tendering and contracting
- Project implementation

Services

- Technical and detailed design and assistance during approval procedures
- QA/QC plan
- Tender dossier for works contracts and for supply contracts
- Tendering and contracting
- Supervision of construction corresponding to the FIDIC rules (Red Book)
- Project management during implementation
- Training of staff

Remediation of landfill Lipprandis

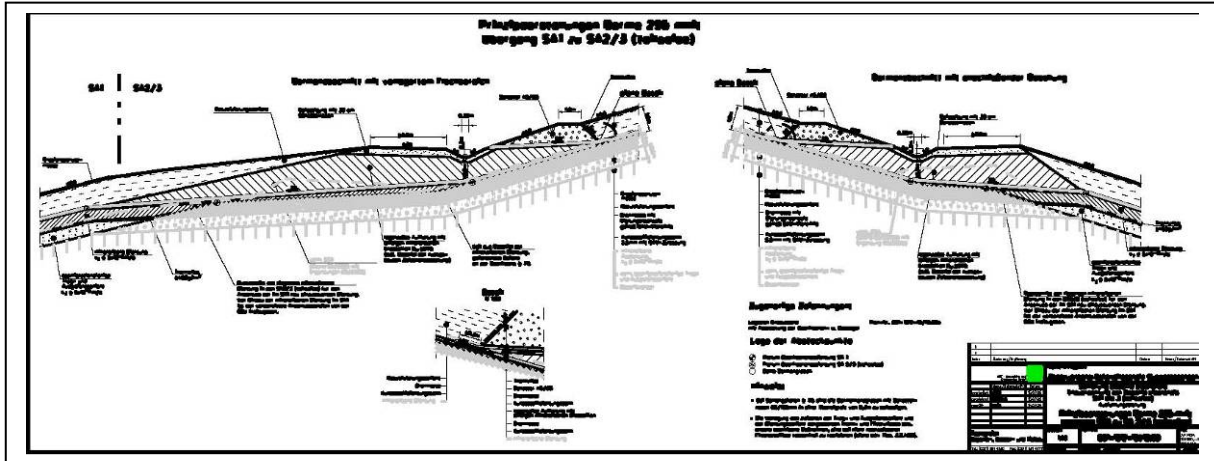
Final closure of landfill

Lipprandis cells 1 to 3

C&E · Consulting und
Engineering GmbH



D-09117 Chemnitz • Jagdschänkenstraße 52
Tel.: +49 (0) 371 881 4228 • Fax: +49 (0) 371 881 4311
E-mail: info@cue-chemnitz.de
Internet: www.cue-chemnitz.de



Bench 295 m HN – transition of section 1 to section 2/3



Profiling cell 1



Installation of mineral sealing layer cell 1



Installation of geomembrane and drainage mat cell 1



Placement of reclamation soil section 1

**Remediation of landfill Lipprandis
Final closure of landfill
Lipprandis cells 1 to 3**

C&E · Consulting und
Engineering GmbH



D-09117 Chemnitz • Jagdschänkenstraße 52
Tel.: +49 (0) 371 881 4228 • Fax: +49 (0) 371 881 4311
E-mail: info@cue-chemnitz.de
Internet: www.cue-chemnitz.de



Strengthening of applied mineral sealing layer sections 2/3



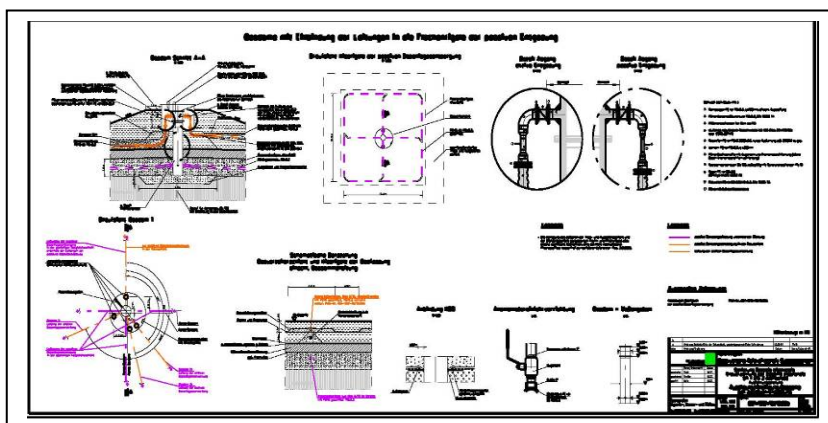
Geomembrane and drainage mat sections 2/3



Track of the gas suction pipes



Trenching for the passive landfill degasification



Gas well heads with fittings for the active and passive landfill degasification