

Database for the collection of water analyses and water levels data within the monitoring of the mining site Lermontov (Russia)

C&E · Consulting und Engineering GmbH



D-09117 Chemnitz • Jagdschänkenstraße 52
 Tel.: +49 (0) 371 881 4228 • Fax: +49 (0) 371 881 4311
 E-mail: info@cue-chemnitz.de
 Internet: www.cue-chemnitz.de

Objective: It must be carried out the long-term water monitoring at the mining site Lermontov (Russia) with the objective to create the data base for the long-term assessment and monitoring.

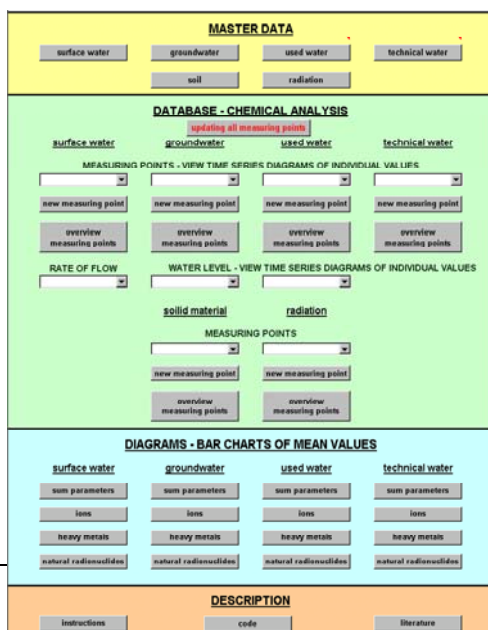
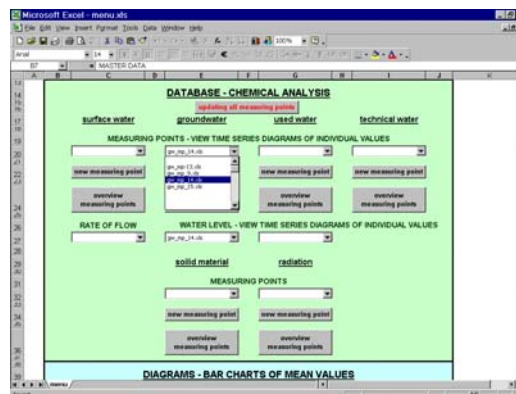
Client: European Commission

Beneficiary: European Commission

Year: 2004

Initial situation:

Annually within the further monitoring at the site Lermontov the measuring values are taken from the different measuring points of ground and surface water as well as from soil samples and radiological measurements. These values must be documented and archived comprehensively. For this reason it was worked out the programmed database.



Services provided:

- Programming of MS Excel-Database
- Development of a user interface to enter the geographical, water chemical, radiological and hydrological data for the long and short time monitoring
- Implementation of option for development of user specific graphics
- Work out of documentation manual