

Remediation concept for the Uranium Mines of the state enterprise „Almaz“ in Lermontov – Russia

C&E · Consulting und
Engineering GmbH

C&E

D-09117 Chemnitz • Jagdschänkenstraße 52
Tel.: +49 (0) 371 881 4228 • Fax: +49 (0) 371 881 4311
E-mail: info@cue-chemnitz.de
Internet: www.cue-chemnitz.de

Project target: Preparation of remediation concepts including technical design for remediation of surface and underground mining objects at the locations Beshtau site (mine, waste rock piles), the Byk site (mine, waste rock piles), the hydrometallurgical plant and the tailings pond

Location: Lermontov
Russia

Client: European
Commission

Beneficiary: Ministry on Atomic
Energy of the
Russian Federation
(MINATOM)

Date: 2004 – 2005



Initial situation:

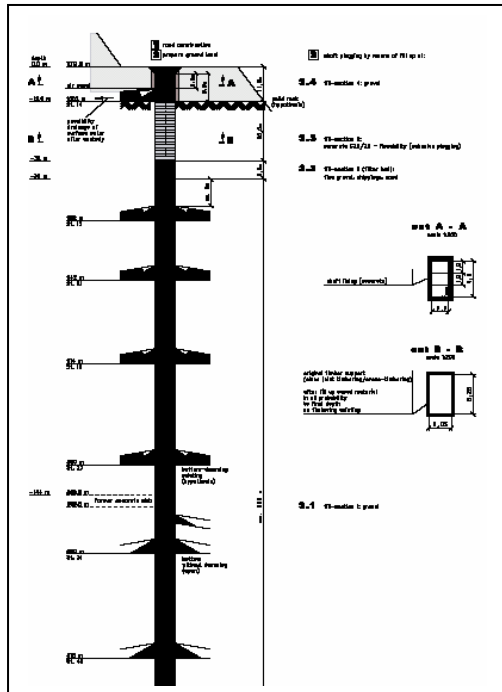
The project aims on the remediation of environmental damages caused by Uranium mining and milling in the area of Lermontov which is located in the Caucasian Mineral Water District. From 1950 to 1992, two underground Uranium mines were operated in the area, at the Besh-tau (mine #1) and the Byk (mine #2) mountains, respectively. Close to Lermontov, a Uranium processing plant was operated. The residues of ore processing were disposed on in a tailings pond facility close to the plant.

Remediation concept for the Uranium Mines of the state enterprise „Almaz“ in Lermontov – Russia

C&E · Consulting und Engineering GmbH



D-09117 Chemnitz • Jagdschänkenstraße 52
 Tel.: +49 (0) 371 881 4228 • Fax: +49 (0) 371 881 4311
 E-mail: info@cue-chemnitz.de
 Internet: www.cue-chemnitz.de



Services provided:

- Data collection and completion of the data base
- Development of a conceptual geological and hydrological model for the Lermontov site
- Risk assessment of the Lermontov site
- Feasibility study
- Conceptual Design of the proposed remediation of the Lermontov site with
 - proposed technology for the demolition of facilities, the excavation of contaminated soil, the removal and transport of contaminated soil and wastes, the stabilization of waste rock dumps and tailings ponds, the closure of the two underground mines stabilization, and the water collection and water treatment.
 - description of the equipment to be used,
 - estimation of the volumes/ mass balances to be handled,
 - cost estimation,
 - considerations regarding infrastructure (roads, electricity and water supply)

Contract volume: 888 TEUR

