

Seismic reflection measurements for determination of existence and location of old mining cavities of lignite

C&E · Consulting und Engineering GmbH



D-09117 Chemnitz • Jagdschänkenstraße 52
Tel.: +49 (0) 371 881 42 28 • Fax: +49 (0) 371 881 43 11
E-mail: info@cue-chemnitz.de
Internet: www.cue-chemnitz.de

Objective: Localisation of unknown cavities from the old mining/underground mining of lignite on two investigation fields

Location: Bitterfeld and Holzweißig

Client: LMBV Saxony-Anhalt

Beneficiary: Central-German Mining Administration (LMBV)

Period: 2001

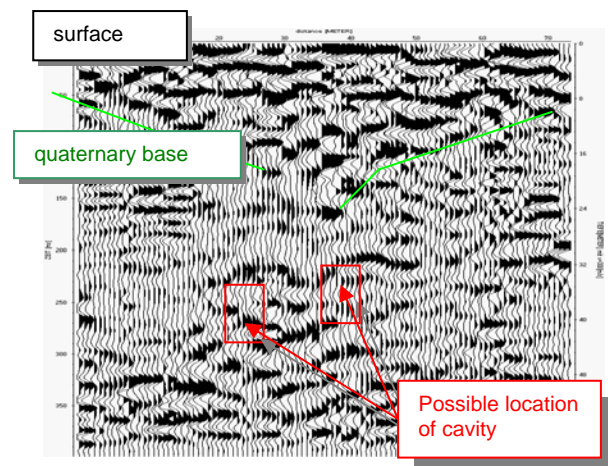
Budget: 180.000 DM

Initial situation:



Seismic measurements for localisation of cavities

- In the area of Bitterfeld lignite mining was started in 1837. The existing documents were incomplete and partly inaccurate at the start of industrial mining in the open-cast mine, this could show the subsidence in the past 20 year. To prevent further damages of the public safety the suspected contaminated sites have been bordered and tested on the existence of residual cavities.



Example of seismic section from the investigation area

Services provided:

- Design and organisation of surface seismic reflection measurements on the two suspected contamination sites in cooperation with sub-contractor
- Information of local residents and site owners, coordination and realisation
- Evaluation and presentation including the recommendation for the drilling points