

Technical analysis of geomechanical and radiological conditions in the area of Kirchplatz St. Wolfgang's church in Schneeberg

Development of remediation measures for the long-term removal and reduction of hazard risks related to Wismut-old mining

C&E · Consulting und Engineering GmbH



D-09117 Chemnitz • Jagdschänkenstraße 52
Tel.: +49 (0) 371 881 22 39 • Fax: +49 (0) 371 881 45 89

E-mail: info@cue-chemnitz.de
Internet: www.cue-chemnitz.de

Objective: Development of remediation measures for the long-term removal and reduction of hazard risks related to Wismut-old mining in the area Kirchplatz St. Wolfgang's church in Schneeberg

Location: Schneeberg

Client: WISMUT GmbH
Chemnitz, PT Alt

Beneficiary: WISMUT GmbH
Chemnitz, PT Alt

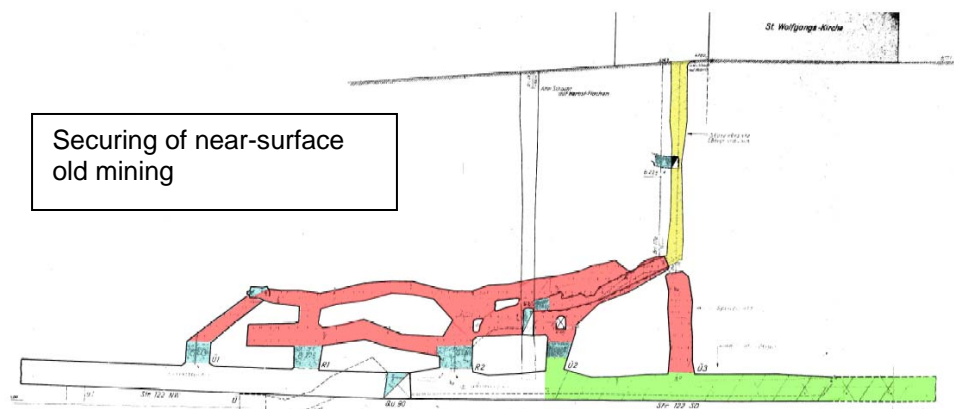
Year: 2005 – 2006

Remediation area: approx. 30 ha

Budget: 50 T€

Services provided:

- **Analysis and assessment** of the current mine damages and radiological situation in the mining area Kirchplatz St. Wolfgang's church
- **Assessment of subsidence caused by mining** for derivation of safekeeping measures under consideration of the above objective
- **Assessment of radiological situation** in connection with the safekeeping measures
- **Development of the integrated safekeeping concept** under consideration of results of mine damages and technical and radiological situation
- **Cost estimation** for the measures proposed



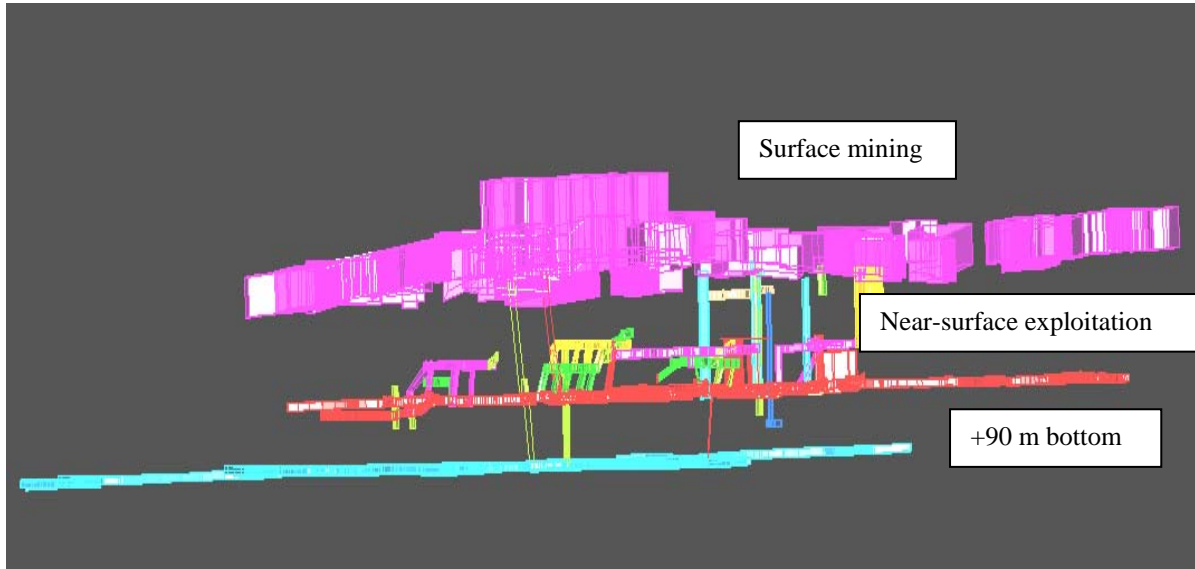
Technical analysis of geomechanical and radiological conditions in the area of Kirchplatz St. Wolfgang's church in Schneeberg

Development of remediation measures for the long-term removal and reduction of hazard risks related to Wismut-old mining

C&E · Consulting und Engineering GmbH



D-09117 Chemnitz • Jagdschänkenstraße 52
Tel.: +49 (0) 371 881 22 39 • Fax: +49 (0) 371 881 45 89
E-mail: info@cue-chemnitz.de
Internet: www.cue-chemnitz.de



Visualised entire site model (3-D)

